

# Biggs



## North Pintail Duck Club

This club is located southwest of the town of Richvale. It's cross roads are Hwy 162 and Wickman road. The property is just over 800 acres with 10 blinds in rice. This property shoots 7 days a week and gets water near the opener.

Trailer parking available for additional fee \$400

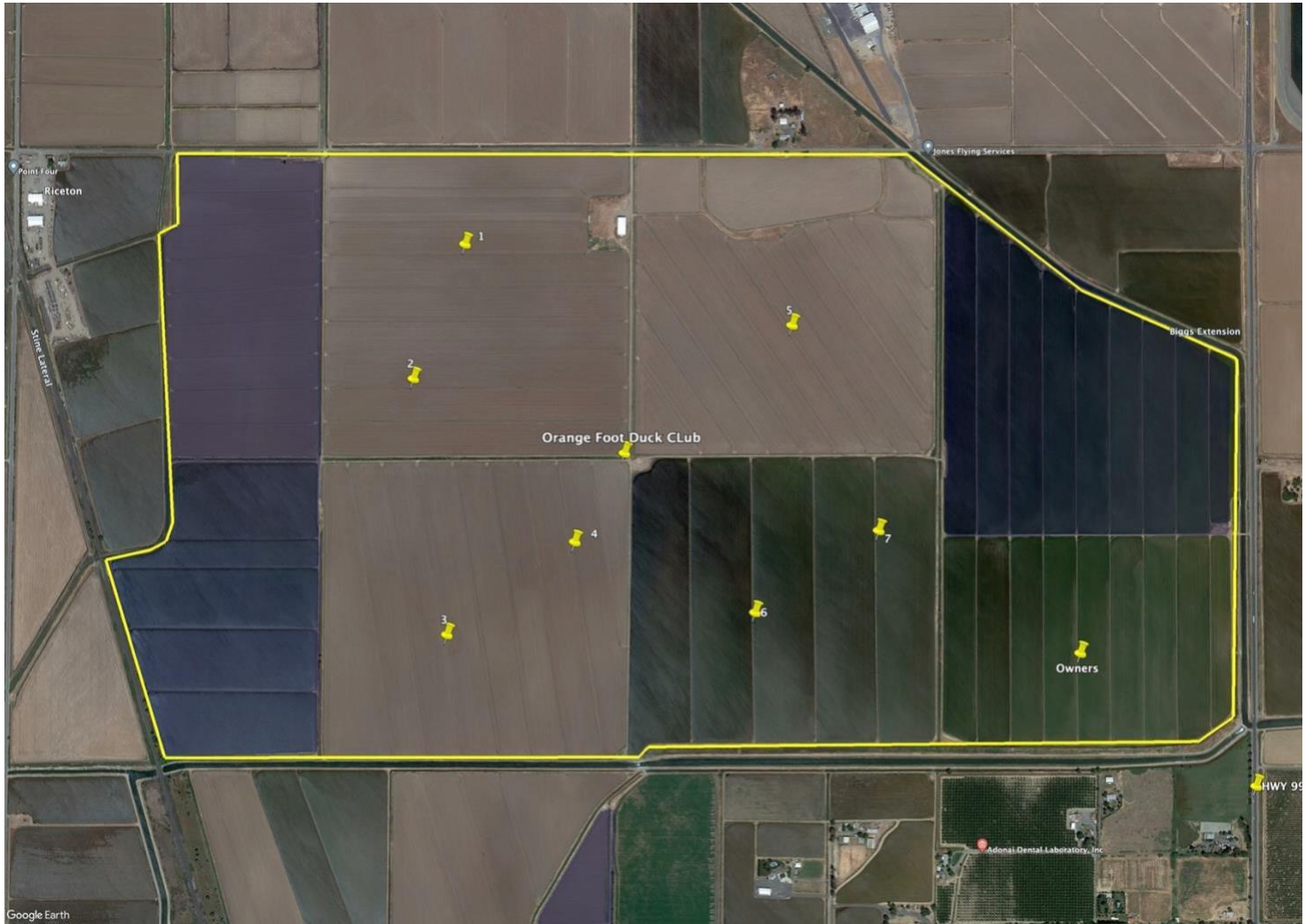
Shoots 7 days a week

Season opens once farming is finished, through junior hunt and late goose

Current blinds open:

Blind #5 – 4man blind 70 acres ~~\$1,875~~ Now \$1,250 per seat

# Biggs



## Orange Foot East Duck Club

This club is located south of Hamilton Rd and west of HWY 99. The property is just under 1000 acres with 8 blinds in rice. Areas in dark blue do not get hunted and are flooded. Purple area may be left dry and get hunted a few times per season for geese. This property shoots Saturday, Sunday and Wednesday and gets water near the opener (most years). Set and pull decoys each hunt day.

Shoots 3 days a week + weather days

Season opens once farming is finished, through junior hunt and late goose

Current blind open:

Blind #4 – 4man blind 80 acres ~~\$2,000~~ Now \$1,450 per seat



# Colusa



## Ohm Duck Club

This club is located on the north end of OHM road. Meyers road is just to the north but not connected. The cross road to the south is Hahn road. The club is just southwest of the Colusa refuge. This property shoots 7 days a week and gets water near the opener.

Shoots 7 days a week and is in the speck closure

Season opens once farming is finished, through junior hunt and late goose

Current blind open: (Bottom of the map)

Blind #1– 4man blind 120 acres ~~\$2,250~~ NOW \$1,250 per seat